

PARTS

1. MOTOR
2. BOTTOM
3. DRAIN RING
4. O RING
5. MECHANICAL SEAL
6. IMPELLER
7. IMPELLER NAVE
8. FLANGE-SET
9. PUMP CASING
10. PROTECTIVE CAP
11. FLANGE-SET
12. WATER PLUG

SPECIFICATIONS

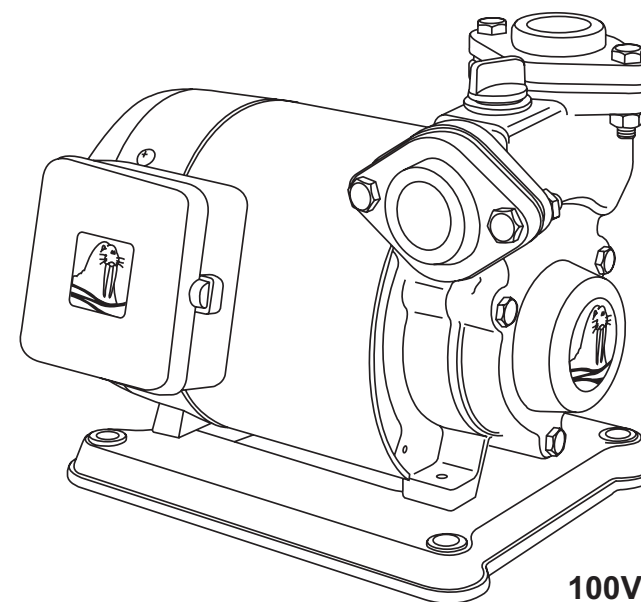
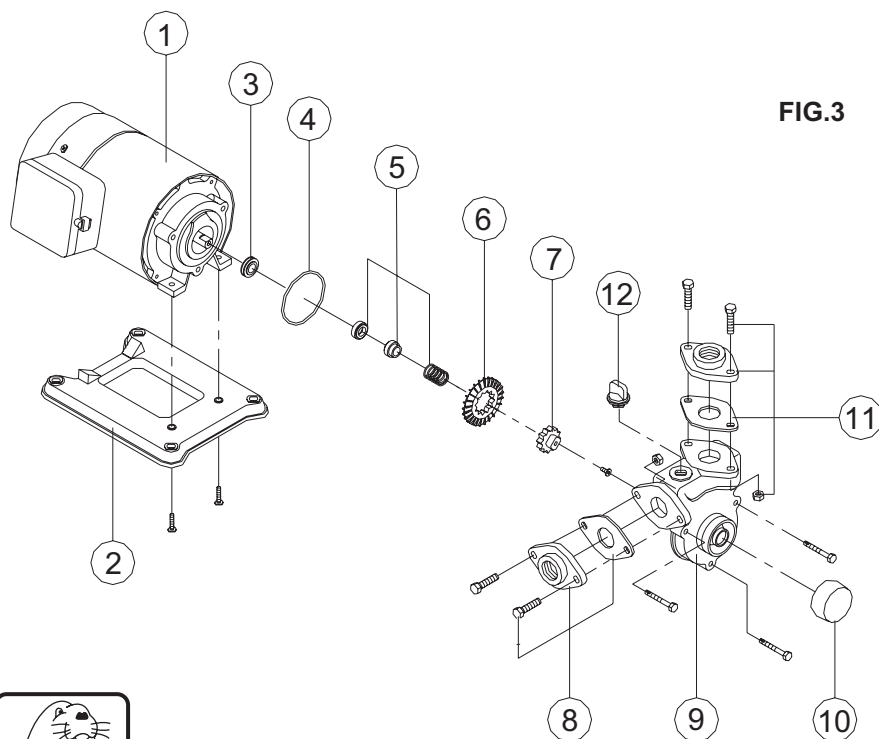
Model No:	TP320		TP325	
Output(W)	370		370	
Cycle(Hz)	50	60	50	60
Revolution	2850	3420	2850	3420
Delivery head(m)	20		20	
Suction head(m)	8		8	
Total head(m)	35	44	35	44
Total capacity (L/min)	42	60	42	60
Inlet (mm)	20(3/4")		25(1")	
Outlet (mm)	20(3/4")		25(1")	
Package size (cm)	29X21X22			
Gross weight	8.5			



TP320/TP325

Direct Water Pump

INSTRUCTION MANUAL



100V~230V
50Hz~60Hz



WALRUS PUMP CO., LTD

ISO 9001 Certified

TAIWAN

P099C00800009-00

ISO 9001 Certified

WALRUS PUMP CO., LTD

OPERATION

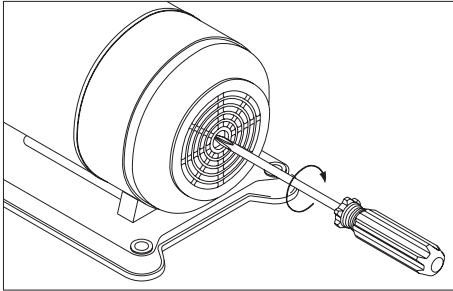


FIG.1

1. Make sure of using the right voltage.
2. Remove the priming cap and pour water into the pump and suction piping ,then secure the plug.
3. Insert a screw driver cross into the shaft slot , and turns the shaft 2-3 rounds to check if the pump runs normally , then open one faucet on the delivery side , the turn the power switch ON.(FIG.1)
4. After the power switch on, the motor should turn immediately . After a few seconds, the water should be delivered.
5. If the water does not be delivered immediately turn the power OFF. Repeat step 2 and set power ON/OFF continuously to make the suction piping be filled with water.

IMPORTANT NOTE

1. Use the right voltage and wiring by the connecting diagram. Motor must be grounded in compliance with applicable electrical code to avoid accident.
2. please use a sturdy foundation and bolt the pump to it securely.

3. Be sure to arrange earthing or circuit breaker against electric leakage.
4. The pump should be installed as close as to the reservoir or well to avoid the low efficiency due to the long suction pipe.
5. The location must be dry with good ventilation and adequate space.
6. Do not run without water actually pumping.
Do not operate hot water (more than 60 °C), or the other liquid except normal water.
7. Be careful not to allow the foreign matter (chips, dirt, sand, glue, etc) into the pump, or the will damage and shorten the life of pump.
8. Piping joints should be fitted carefully to prevent leakage.
 - a. Leakage in the suction piping will cause the pump does not function well.
 - b. If an "outlet for water " is leaking out, then the water pressure will be lowered.
9. Please install a check valve on suction piping.

TROUBLE SHOOTING

(Turn the power switch OFF before fixing.)

1. MOTOR FAILS TO START OR RESTART AFTER A SHORT-TERM RUNNING

The overheating protector is mounted directly on the motor windings. It will stop the motor automatically when the motor temperature is up to abnormal, and restart the motor after the temperature back to normal in 20 minutes.

- a. Check the electrical power source, fuse, and circuit breaker.
 - b. Check if pump is locked by rust or foreign objects.
 - c. Check if the ventilation of the location is bad for causing the overheating of motor.
- 2. When charge pump with electricity and the pump revolve normally but you find no water supply, please check it as followings.**
- a. The pump casing should be full of water , if shortage, please open the red water plug (FIG.3-12) and pour into water anew till quite brimming.
 - b. If water is leaking out from the pipe please install again there's a blockade in the drain-pipe, please clean it out.

- 3. If you can't get rid of the bug, please call to sales agent or the distributive service station.**

Coverage of Application:

To be used on supplying water:

1. For the apartment and residences.
2. For the heater and agricultural irrigation.
3. For the garden pump and sprinkle water.

