



WALRUS

TQIC Series **Inverter Control Pump**

ISO 9001

Applications:

The TQIC series pumps are designed for water supply and pressure boosting in residential, commercial and light industrial applications where low or inadequate water pressure exists. It is suitable for boosting pressure from underground or surface water supplies.

Suitable liquids:

Potable water or other clean or non-corrosive liquids.

Operating Limits:

Ambient temperature: Max. +40°C

Liquid temperature: + 4°C ~ +40°C

Relative Humidity: Max. 85%

Original constant inverter pressure setting:

TQ400 - 2.0 kg/cm²

TQ800/1500/2200 - 3.0 kg/cm²

Product Features:

1. The TQIC is a complete, all-in-one unit, consists of pump, motor, inverter, pressure tank, and electronic controller. The built-in electronic controller provides constant pressure which ensures that the pump starts automatically when water is consumed and operates continuously until water is not required.
2. The Micro Frequency Inverter detects the instantaneous pressure in the system through the pressure transmitted and adjusts motor speed to keep it at the required value. Depended on applications, the pumps offer energy saving or improved processing.
3. Compact design and quiet operation make the TQIC series suitable for many applications.
4. The TQIC is constructed from the top quality corrosion resistant materials.
5. The TQIC has automatic restart function. Once the pump starts to operate, the pressure sensor will automatically detect the pressure limit. If the pressure limit can not reach to the original setting within 2 minutes, the pump will stop and attempt to restart every 10 minutes until the function is deactivate. It will also stop when the temperature exceeds 55°C, and will restart when the temperature drops to 40°C.
6. The motor has built-in thermal overload to protect against high operating temperatures and over current.
7. The TQIC has an anti-cycling feature which prevents the pump from continuous starting and stopping when you have a dripping tap or minor leak in the system.
8. The pumps will lift water up to 7.6m with foot valve and pump suction piping filled with water.

WALRUS PUMP

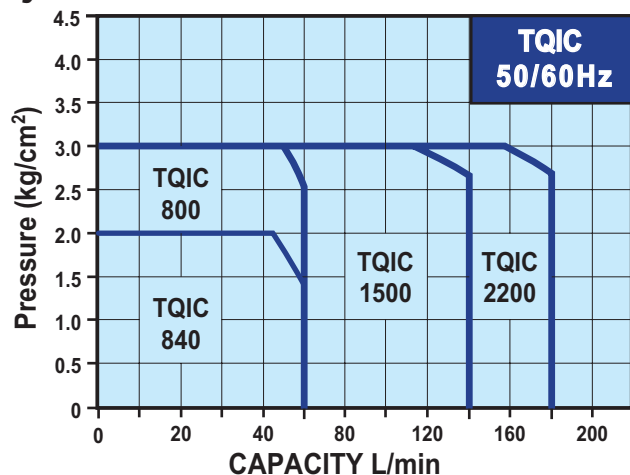




WALRUS

TQIC Series Inverter Control Pump

Hydraulic Performance curve:

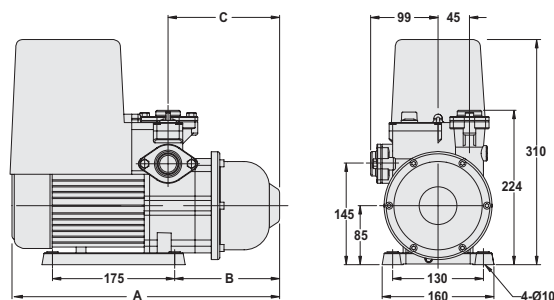


Materials

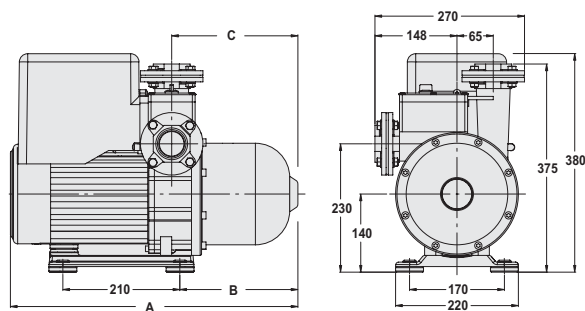
| Part name | TQIC 400/800 | TQIC 1500/2200 |
|----------------------|----------------------------|------------------|
| Pump casing | Glass filled noryl | |
| Filling plug | NyLon | |
| Outlet & Inlet | SUS 304 | |
| Intermediate Chamber | Glass filled polycarbonate | SUS 304 |
| Impeller | Glass filled noryl | SUS 304 |
| Mechanical Seal | Ceramic+Carbon+NBR | SiC+Carbon+Viton |
| Shaft | SUS 410 | SUS 304 |
| Motor Shell | Aluminum alloy | |

Dimensions: (mm)

TQIC400/800



TQIC1500/2200



| Model | A (mm) | B (mm) | C (mm) |
|----------------|--------|--------|--------|
| TQIC 400 | 390 | 147 | 152 |
| TQIC 800 | 416 | 173 | 178 |
| TQIC 1500/2200 | 500 | 218 | 232 |

Specification:

| Model | Power (HP) | Cycle (Hz) | Phase (Ø) | Voltage (V) | Amp's (A) | Inlet (in.) | Outlet (in.) | Pre-set Pressure (kg/cm ²) | Nominal Capacity (L/min) | N.W. (kg) |
|----------|------------|------------|-----------|-------------|-----------|-------------|--------------|--|--------------------------|-----------|
| TQIC400 | ½ | 60 | 1 | 230 | 3.0 | 1" | 1" | 2.0 | 42 | 11.5 |
| | | | 3 | 230 | 3.0 | | | | | |
| TQIC800 | 1 | 60 | 1 | 230 | 5.0 | 1" | 1" | 3.0 | 50 | 13.0 |
| | | | 3 | 230 | 5.0 | | | | | |
| | | | 3 | 460 | 2.5 | | | | | |
| TQIC1500 | 2 | 60 | 1 | 230 | 8.0 | 2" | 2" | 3.0 | 110 | 29.6 |
| | | | 3 | 230 | 8.0 | | | | | |
| | | | 3 | 460 | 4.0 | | | | | |
| TQIC2200 | 3 | 60 | 1 | 230 | 11.0 | 2" | 2" | 3.0 | 160 | 30.4 |
| | | | 3 | 230 | 11.0 | | | | | |
| | | | 3 | 460 | 6.0 | | | | | |

WALRUS PUMP

All specifications are subject to change without notice.